



Foundation for Social Welfare Services



FEAD

Addressing Poverty TOGETHER

**Accompanying Measures
and Good Practices**

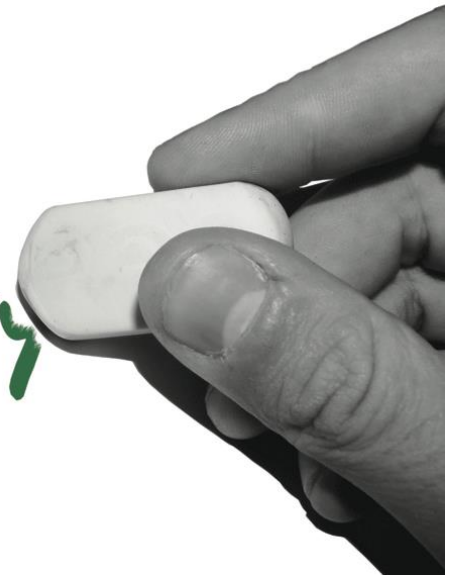
Wednesday, January 22nd 2020



**Stephen C Vella BA Hons MA
Director Corporate Services
Foundation for Social Welfare Services
FEAD Partner Organisation**

Φτώχεια

poverty



Poverty is a complex societal issue.

It is a multifaceted **concept**, which include social, economic, and political elements.

The best way to tackle/eradicate poverty is through

Empowerment - Ενδυνάμωση

EDUCATION / EMPLOYMENT / WELFARE SERVICES

Εκπαίδευση

Απασχόληση

κοινωνική πρόνοια



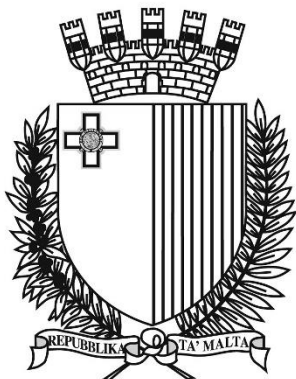
EU Fighting poverty and exclusion

A strong social Europe (Com 2020)

Living a life in dignity means getting the support needed to look for a **job**, being able to access affordable and quality **health care**, decent opportunities for **education and training**, affordable **housing** and affordable **access to essential goods and services**, including water, energy, transport and digital communications.

Εργασία
οικονομική περίθαλψη
εκπαίδευση και κατάρτιση
Στέγαση
πρόσβαση σε βασικά
αγαθά και υπηρεσίες

FEAD IN MALTA



Project being led by the Ministry for the Family, Children's Rights and Social Solidarity



Foundation for Social Welfare Services

Partner Organisation – availing of the expertise and experience gained from an ESF project LEAP (2015-2016), and fully mainstreamed into a new Agency focusing specifically on community work – reaching out to the most deprived



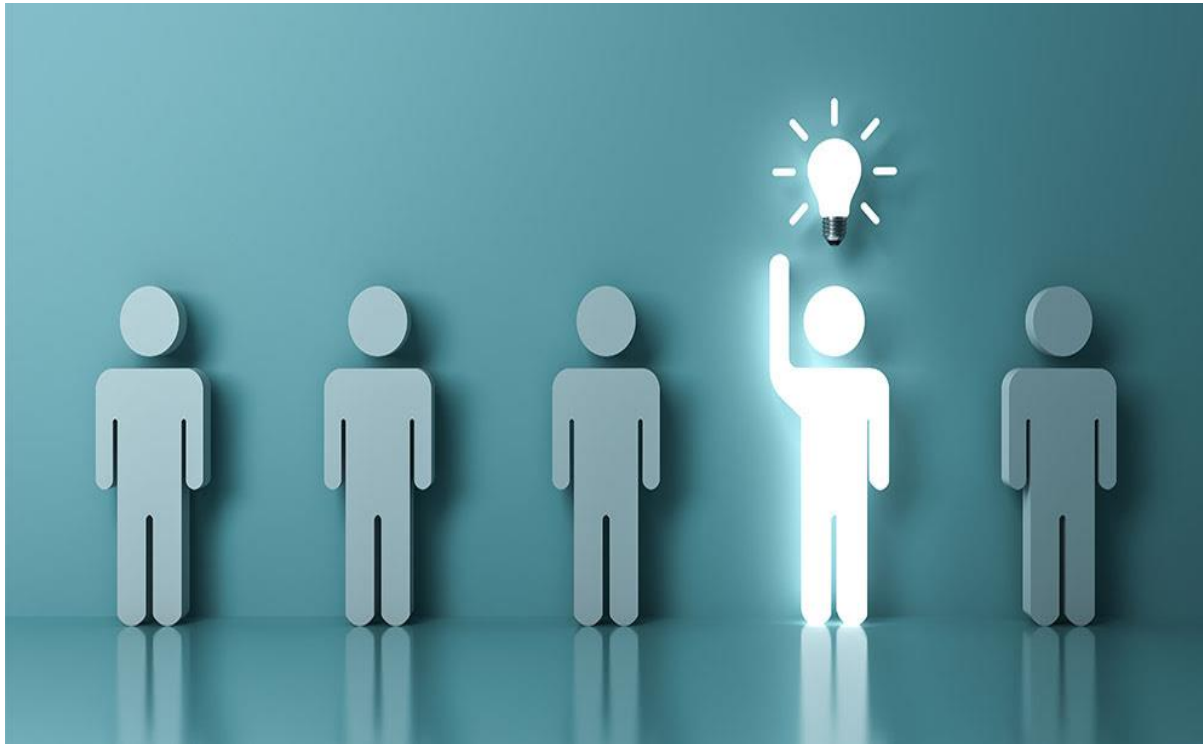
The food package
is our
first contact!
**The follow-up is
what greatly
matters**



**MAIN
OBJECTIVE:**
Independence
of benefits



Innovative ways to tackle poverty



If we do not fall in love ❤️ with the **process** we will never owe the results!

Αν δεν ερωτευτείτε ❤️ με τη **διαδικασία** δεν θα χρωστάμε ποτέ τα αποτελέσματα!

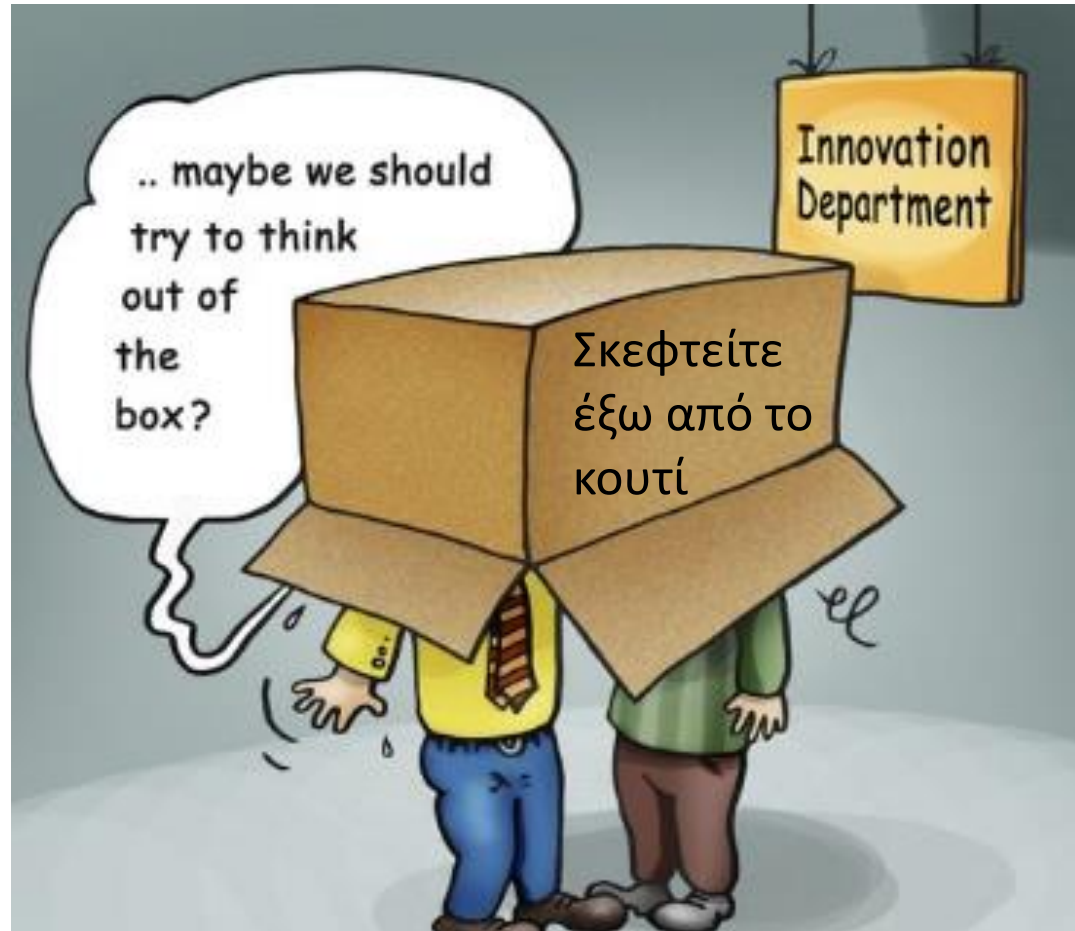
Καινοτόμες μέθοδοι για την αντιμετώπιση της φτώχειας

Practical solutions to tackle poverty...

...we need to focus



Εστίαση



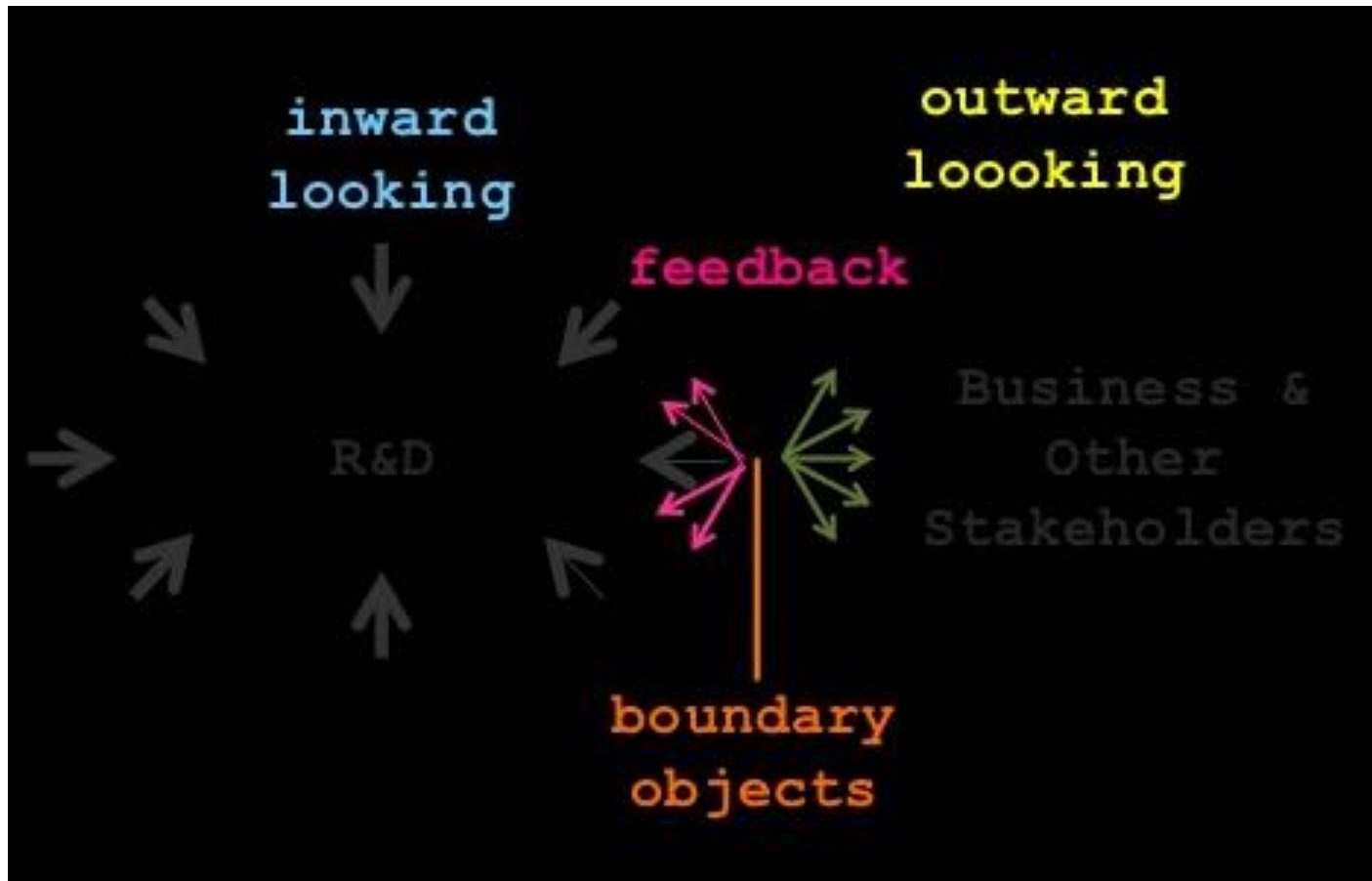
Challenging institutions and bureaucracy

Ιδρύματα

Γραφειοκρατία



Outward looking - Εξωτερική κοιτάζοντας



If we do not explode innovatively – we implode

Αν δεν εκραγούμε καινοτομικά – γκρεμίζεται

Process
Διαδικασία

Knowledge
Γνώση

GOOD PRACTICE

καλή πρακτική

Skills
Δεξιότητες

Values & ethics

αξίες και ηθική



Traditional accompanying measures

Nutrition & Health Information

Healthy Eating

Cooking on a Budget

Household Budgeting

Positive Parenting



Profiling

προφίλ

Consent sought and visits carried out to over 3,200 FEAD families. Family profiles/ SWOT analysis compiled and recommendations offered.

8,870 FEAD family members profiled.

Over 18,000 profiles carried out
Disability; FEAD; Housing Authority;
Local Banks; Water & Energy Agency.

AREAS COVERED

Demographic

Educational

Family Structure

Skills / competences

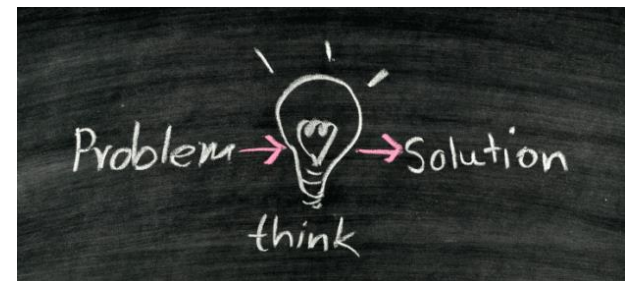
Assistance required

Causes of Poverty (outcome from profile)

αιτίες της
φτώχειας



- Mismanagement of limited funds (HOME VISITS – budgeting)
- Dwelling Rental expenses (Bank loan schemes – Housing Authority profile)
- Illnesses / Disability within the family
- Lack of family planning / single parents (Positive parenting courses)
- Benefit Trap (Close collaboration with Social Security Services)
- Past criminal activities / conduct (LEAP2Enterprise Scheme)
- Addictions (gambling, alcohol & drugs)



Accompanying measures

PROFILING – knowing clients (as much as possible)

Collaboration with major stakeholders

Ministries / Government entities / NGOs

- Water & Energy Agency – white goods' exchange
- MaltaEnterprise – 9 referred €25K grants
- Education & Employment institutions
- Social Security Department
- Housing Authority - profiling
- Banks Loan schemes – 10% initial waiver
- National Literacy Agency – book distribution / courses



5 Innovative accompanying measures

THE
ENERGY
& WATER
AGENCY

white goods' exchange
profile / home visits – follow-up



MALTAENTERPRISE



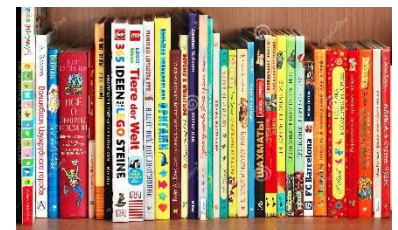
9 referred €25K grants

Assist vulnerable individuals in setting up their own sustainable, income-generating business activities.

Housing Authority 90 Banks Loan given - up to Euro120,000 without need to pay 10% down payment- buying instead of leasing – Over 900 cases being processed.



book distribution during
FEAD collection / courses



Community Work Operational Strategy



Foundation for Social Welfare Services

1st Stage

- Drop-in service
- FEAD / SFFD Distribution to the most deprived
- Home Visit consent obtained through FEAD or SFFD distribution

2nd Stage

- Key worker assigned to family
- Profiling exercise with each family member
- Introducing Governments benefits, schemes and programmes

3rd Stage

- FEAD Accompany measures
- Encouraging those with a high employment readiness to seek employment
- Assisting the clients with their basic necessities such as children's after school care etc

4th Stage

- Refer clients to other agencies or service providers
- Conduct empowerment workshops and activities
- Continuous contact and support to our clients during and after all of the above stages.

SOCIAL CAPITAL - Κοινωνικό κεφάλαιο

The assets we possess by virtue of the **social** relations that we develop and maintain, and the shared values which arise from those networks, **make up social capital.**

It is the network of relationships among people who live and work in a particular society, enabling that society to function effectively.

We should never cease to invest in social capital

Δεν πρέπει ποτέ να σταματήσουμε να επενδύουμε σε κοινωνικό κεφάλαιο

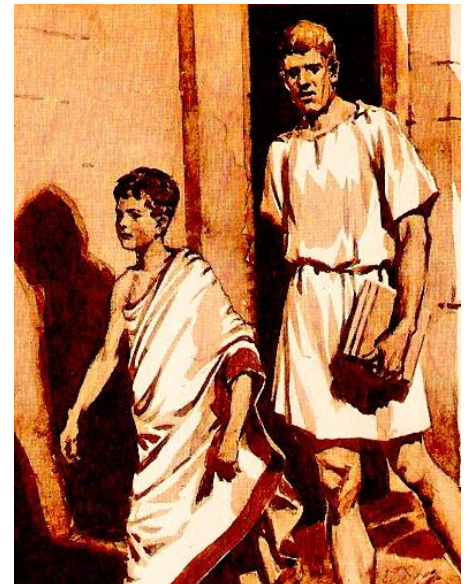


Back to basics

The best **accompanying** measures are:
our positive + attitude, personal
approach and mutual trust!
It's all **pedagogical**!

πίσω στα βασικά

Τα καλύτερα **συνοδευτικά** μέτρα είναι:
η θετική + μας στάση, η προσωπική
μας προσέγγιση και η αμοιβαία
εμπιστοσύνη!
Είναι όλα **παιδαγωγικά**!





Foundation for Social Welfare Services

Thank you!
Ευχαριστούμε

